

# Penthouse B Westhaven

Canford Cliffs  
Poole, Dorset  
BH13 7BB



# Penthouse B Westhaven

Western Road, Canford Cliffs

Poole, Dorset

BH13 7BB

*Price Guide £724,950*

An immaculately presented three bedroom penthouse apartment which is situated in a prestigious gated development in the heart of the affluent area of Canford Cliffs.

Only moments away is the area's local sandy beach and a short level walk away is an array of local amenities which includes two excellent gastro pubs, The Cliff and The Canford.

## *Summary of Accommodation*

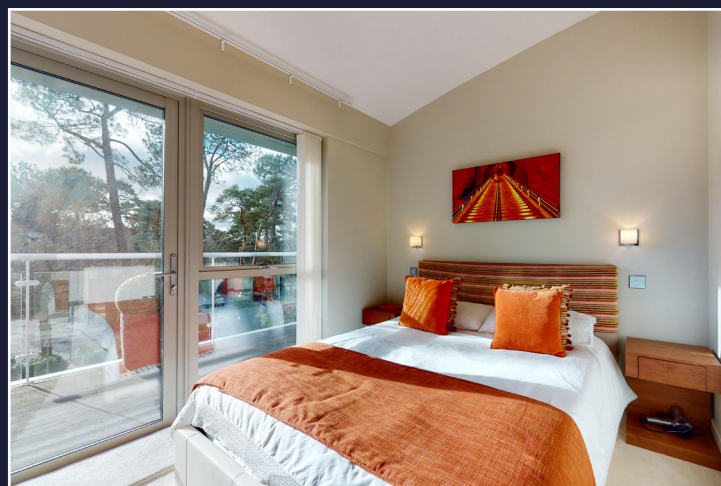
Audio entry phone system • Lift serving all floors

3 double bedrooms • Utility cupboard

2 bathrooms, both with bath & separate shower

Kitchen with integrated appliances

Underground parking and personal store cupboard





The world famous Sandbanks Peninsula, with its array of safe and sandy beaches, marinas and yacht clubs are within easy reach and boast a whole host of water sports facilities.

The 18 hole Championship Parkstone Golf Course is approximately a mile away and the more comprehensive towns of Poole and Bournemouth are approximately three miles equidistant.

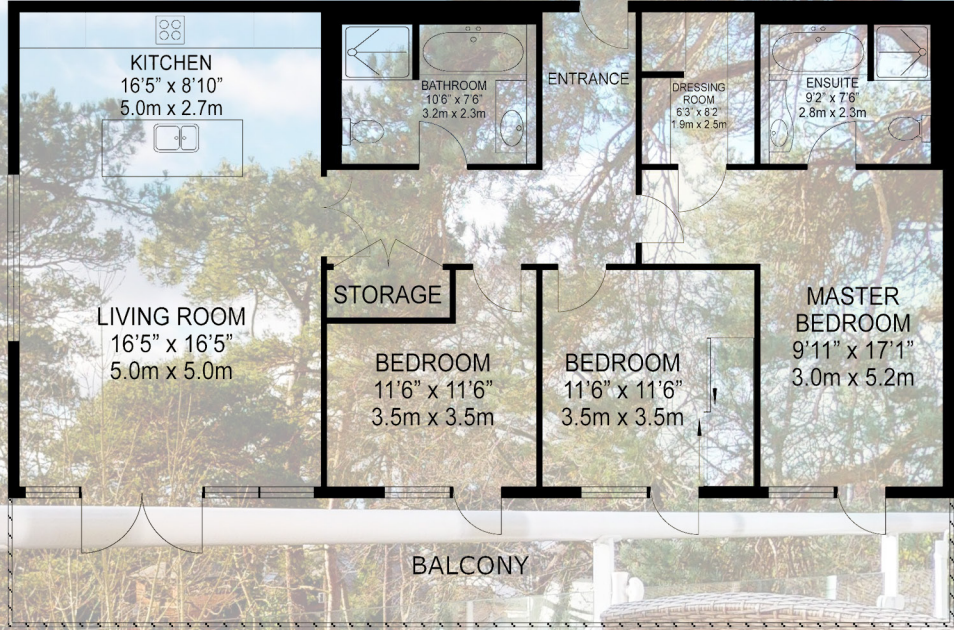
With accommodation approaching 1,300 sq ft, this stylish and contemporary property would make an ideal main home or a great 'lock up and leave' second home for those wishing to be close to the sea.



The accommodation throughout is bright and spacious and boasts luxurious fixtures and fittings which include a stylish kitchen, two contemporary bathrooms (one ensuite), three double bedrooms with walk in wardrobe to the master and a fitted wardrobe to bedroom two.

There is a generous decked balcony that can be accessed from all three bedrooms and the open plan lounge/ kitchen/diner. The balcony is south facing and has sea glimpses from the master bedroom.

Outside, the grounds are expertly maintained with a side gate to the village, bike store and driveway.



GROSS INTERNAL AREA  
 FLOORPLAN: 1289 sq ft (119 sq.m.)

# Lloyds Property Group

PROPERTY NAME

Penthouse B Westhaven

Total Floor Area = 119 sq m / 1,289 sq ft

LOCATION

Western Road  
 Canford Cliffs, Poole

VIEWING ARRANGEMENTS

Telephone: +44 (0)1202 708044  
 Email: [enquiries@lloydspropertygroup.com](mailto:enquiries@lloydspropertygroup.com)  
 Ref: 3343 JA

*Illustration for identification purposes only, measurements are approximate, not to scale*